

# Home Elevators



# ABOUT CIBES | SYMMETRY

## A PART OF CIBES LIFT GROUP

Our company was founded in 2008, by an entrepreneurial group of people, driven by the vision of elevating life across the US. Today, Symmetry has become a household name for elevators in North America, with high rankings on the Forbes List for Best Home Elevators.

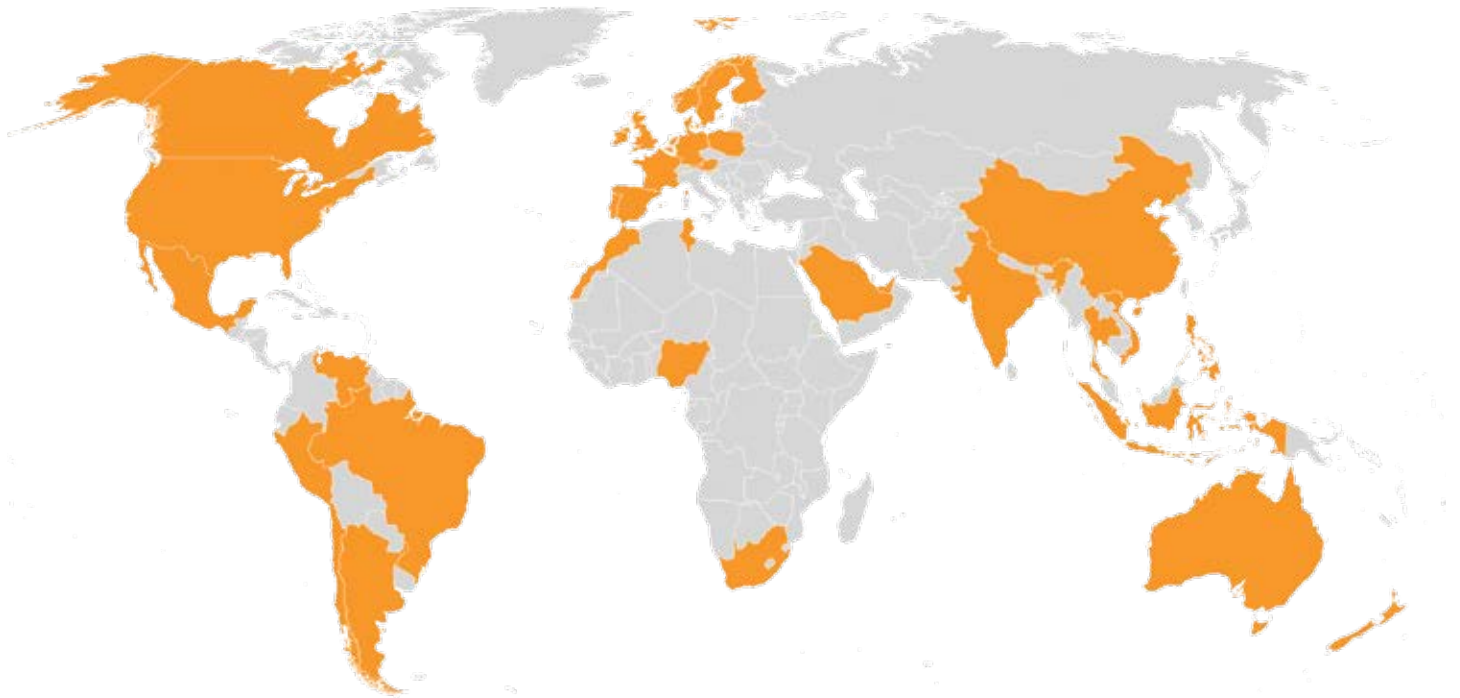
In 2022, we joined forces with global Swedish elevator manufacturer Cibes Lift Group and became Cibes Symmetry. Together, we offer you close to a century of consolidated knowledge, combining Swedish innovation and design with US craftsmanship and expertise. Our wide range of ADA and ASME compliant elevating solutions are manufactured in the US and in Sweden and distributed through our nationwide network of authorized dealers.



We provide beautifully crafted, expertly engineered accessibility related products across America. We market our residential elevators, home and commercial lifts, and low-rise commercial elevators through an exclusive network of carefully chosen Cibes Symmetry Partners.

## CIBES LIFT GROUP

# A GLOBAL SALES NETWORK



### PRESENT IN:

**UNITED STATES OF AMERICA** | SWEDEN | NORWAY | FINLAND | FRANCE | UNITED KINGDOM | GERMANY | DENMARK | NETHERLANDS | SPAIN | AUSTRIA | BELGIUM | PORTUGAL | POLAND | IRELAND | MALTA | DUBAI | CHINA | VIETNAM | THAILAND | INDONESIA | PHILIPPINES | CAMBODIA | INDIA | SAUDI ARABIA | QATAR | BAHRAIN | EGYPT | SOUTH AFRICA | NIGERIA | MOROCCO | TUNISIA | AUSTRALIA | NEW ZEALAND | COLUMBIA | BRAZIL | PERU | CHILE | ARGENTINA | CANADA | MEXICO |

# CIBES SYMMETRY ELEVATORS ACROSS THE USA



**UTAH**



**FLORIDA**



**MISSOURI**

## **CIBES SYMMETRY ADVANTAGES:**

- › Proudly made in the U.S.A. 🇺🇸
- › The most customizable elevator on the market
- › Represented by the finest, professional distribution network, factory trained to ensure the highest quality service
- › Available with an industry leading three-year limited parts warranty

# CUSTOMIZATION

## SELECT YOUR CAR STYLE



### FLAT PANEL

The Flat panel car offers an unlimited opportunity to be customized and trimmed right in your home to complement your style.

### SHAKER PANEL

Modeled after the simplistic design and rugged durability of the Shaker culture, the Shaker panels embellish the elevator with their clean lines and subtle nuance.

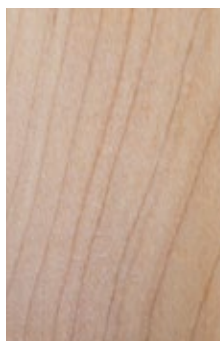
### WOODS



Birch  
(Standard)



Red Oak  
(Standard)



Maple



Alder



Cherry



Hickory

Colors illustrated may vary due to print or digital technology

# CUSTOMIZATION

## WOOD SPECIES & FINISH



### RECESSED PANEL

Providing flat central panels adorned by a raised border, the Recessed panel will add depth and elegance to any elevator

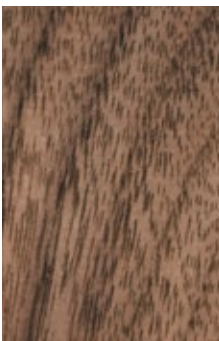


### RAISED PANEL

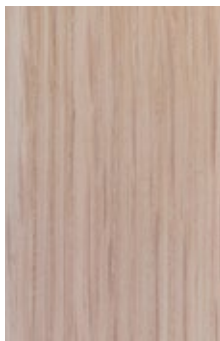
Manufactured by skilled craftsmen, the sweeping contours in the panels, accented by offset border trim, makes the all hardwood Raised panel car stand out.

### WOODS

### STAINS (Shown on Red Oak)



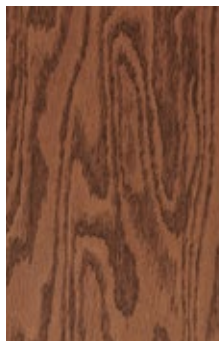
Walnut



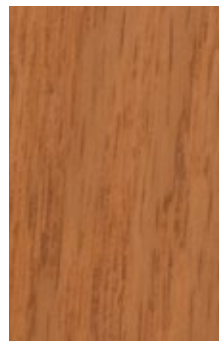
White Oak



Clear Coat



Country Pine



Golden Oak



Traditional Cherry

# DOOR CUSTOMIZATION

## TWO AND THREE SPEED DOORS



Brushed Stainless Steel  
Three Speed Landing Door



Brushed Stainless Steel  
Three Speed Car Door



Black Framed Glass  
Three Speed Car Door



Vintage Bronze  
Two Speed Landing Door



White Powder coat  
Two Speed Landing Door

### FINISH OPTIONS



Beige  
(Standard)



Brushed  
Stainless Steel



RAL Color

#### ALSO AVAILABLE IN:

- › Car door only or cab and landing door
- › Framed glass panels

Colors illustrated may vary due to print or digital technology

To see more custom elevator options please reach out to your local Symmetry representative.

# DOOR CUSTOMIZATION

## THREE PANEL CAR DOOR



Three Panel Car Door with Panoramic Glass



Three Panel Solid Car Door

### FINISHES AND STYLE



Gothic Graphite Black



Clear Glass

#### AVAILABLE IN:

- › Gothic Graphite Black
- › Clear Glass
- › Automatic Door Opener
- › Expansive Vision Panels

### FINISH OPTIONS



Black (Standard)



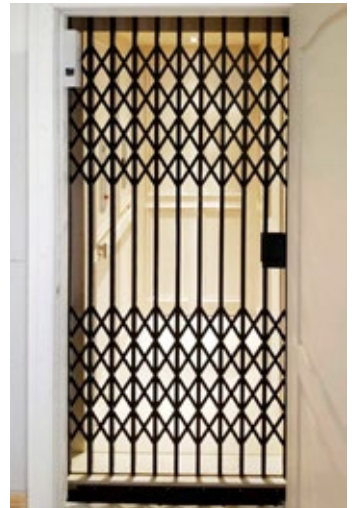
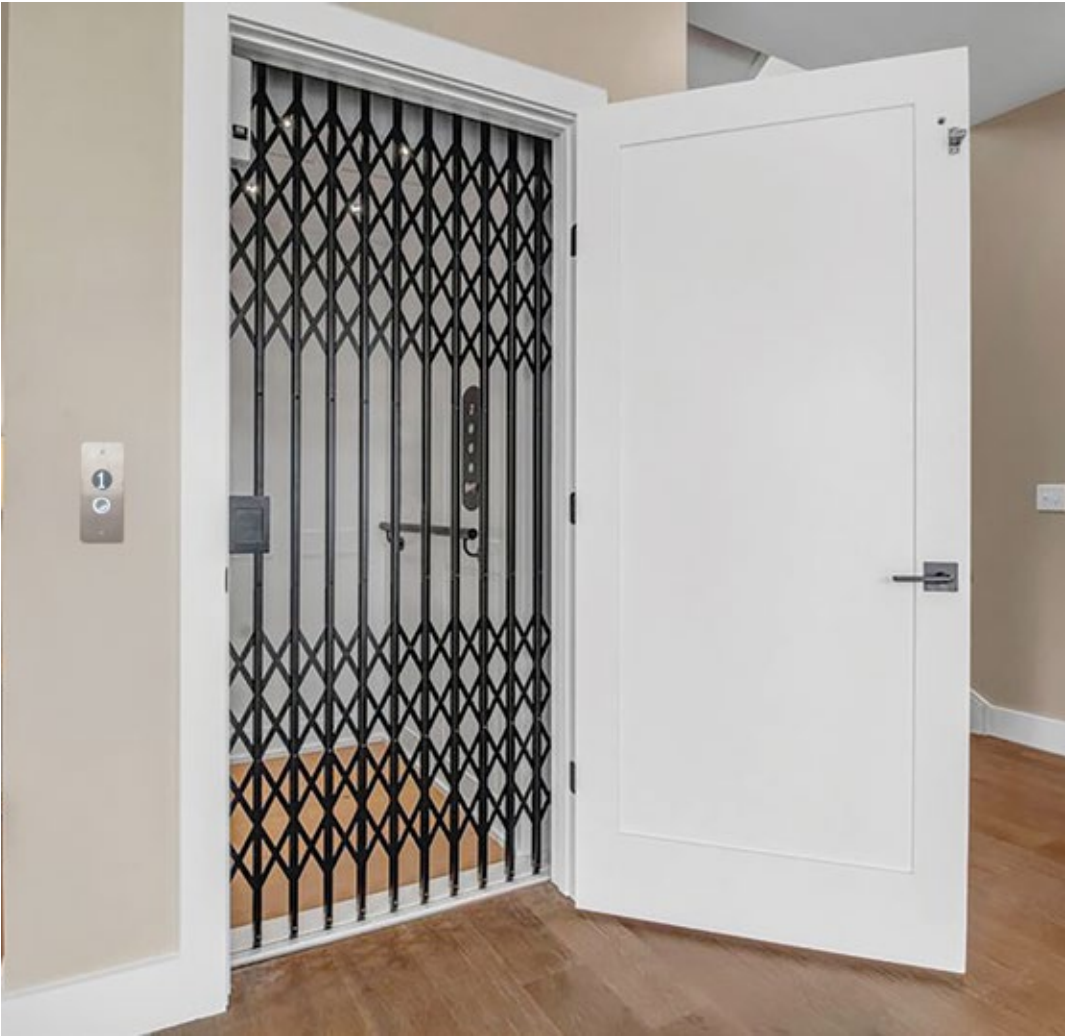
Brushed Stainless Steel

#### AVAILABLE IN:

- › Power car door operation
- › Multiple Finish Options
- › Light Curtain
- › RAL Color

# DOOR CUSTOMIZATION

## ENTERPRISE COLLAPSIBLE GATE



Classic Collapsible Gate

### FINISH OPTIONS



Black  
(Standard)



Brushed  
Stainless Steel



RAL Color

Colors illustrated may vary due to print or digital technology

# DOOR CUSTOMIZATION ACCORDION DOORS

The Accordion Door is offered as a standard feature on our residential elevators.



White Laminate



Clear Acrylic



Light Oak



White w/Clear Acrylic



White w/Clear Acrylic

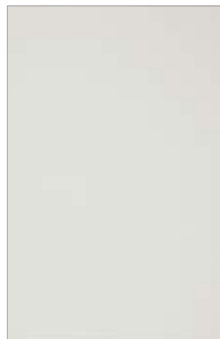
## COLORS OPTIONS & MATERIALS



Light Oak Laminate



Birch Laminate



White Laminate

### ALSO AVAILABLE IN:

- › Laminate Panels in Dark Oak, Chalk, Black, Antique White, Cherry or Walnut
- › Unfinished or finished matching hardwood veneer
- › Clear or Smoked acrylic
- › Solid or Perforated aluminum
- › Clear or Bronze anodized aluminum hardware

# CUSTOMIZATION FIXTURES



Car Operating Panels (COP)



Hall Station



Interlock



Handrails



Recessed LED Lights with Trim

## METALS



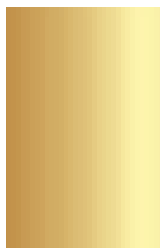
Brushed Stainless Steel (Standard)



Polished Stainless Steel



Brushed Brass



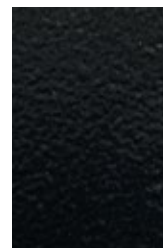
Polished Brass



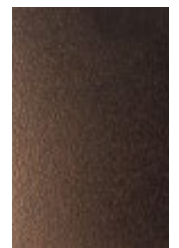
Oil Rubbed Brass



Blackened Stainless Steel



Black



Vintage Bronze

Colors illustrated may vary due to print or digital technology

To see more custom elevator options please reach out to your local Symmetry representative.

# OVERVIEW

## OUR TECHNOLOGIES

### STANDARD FEATURES

---

- › Travel: Maximum of 50'0" (minimum 12" between stops)
- › Speed: 40 fpm
- › Rated Capacity: 1,000 lbs
- › Stops: Two
- › Opening: Single



### INLINE GEAR DRIVE

---

Does not require a machine room, taking up less space in your home.

### SAFETY FEATURES

---

- › Motor controller supply disconnects
- › In-car emergency stop switch and alarm
- › Safety switch for car gates/doors
- › Battery backup emergency car lights and alarm
- › Electro-mechanical hoistway door interlocks
- › Enhanced gate/bypass monitor
- › Unauthorized hoistway entry detection



### HYDRAULIC DRIVE

---

One of the most popular choices for homeowners looking for the quietest ride.



# Cibes | symmetry

Cibes Symmetry is a beautifully crafted, expertly engineered accessibility-related product line proudly made in the U.S.A. at Bella Elevator, LLC since 2008. Promoted and sold by our exclusive nationwide network of carefully selected Symmetry partners and associates, Symmetry offers residential elevators, vertical platform lifts (VPL) and limited use/limited application (LULA) elevators .